



MODULUX

# OUR STORY

At Modulux, metal is more than a surface. It is a craft, a language, and a way to shape space. We work closely with architects, designers, and fabricators to show how metal can transform interiors, façades, and bespoke furniture. Every finish tells its own story of material, process, and vision.

Our journey began with a simple goal: freeing metal from its limits. Heavy sheets, seams, corrosion, and unsafe finishes once restricted design. We developed real-metal solutions that are seamless, lightweight, durable, and safe for people and the environment.

Today, we specialize in liquid metal coatings, arc-wire spraying, and advanced metal finishes. MetaliQ wraps edges and complex geometry in a seamless skin of real metal. TruMetal builds a full-metal layer with authentic strength and texture. Together they offer freedom of design, from brushed and satin surfaces to deep patinas and mirror polishes.

Every finish is applied by hand with attention to detail, consistency, and long-term performance. We use low- and zero-VOC systems, minimize waste, and create surfaces that last.





Our journey began with a simple goal: freeing metal from its limits. Heavy sheets, seams, corrosion, and unsafe finishes once restricted design. We developed real-metal solutions that are seamless, lightweight, durable, and safe for people and the environment.



For us, reimagining metal is about more than appearance. It is about experience, identity, and the dialogue between concept and craft. In every project, metal becomes not just a material but a story and a signature.





# FINISHES PALETTE

Finish selections define the character of each project, refined from years of experimentation with metals, hand tools, and chemical treatments. Each surface is hand prepared and transformed to take on a distinctive yet consistent character.

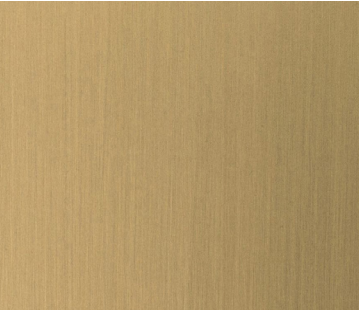
Satin, brushed, and high-polish finishes reveal the raw essence of the metal, from the muted warmth of satin to the gentle linear highlights of brushed finishes and high gloss of highly polished planes that are focal points. Patinated and aged finishes bring depth, warmth, and heritage, colors ranging from the deep bronze brown to the light verdigris of weathered copper or the warm glow of aged brass and created with subtlety from soft weathering to strong contrasts.

For components where something quite special is called for, we specify one-off alloys and special coatings, combining metals, chemical and mechanical treatment and custom colors designed within close collaboration with designers.

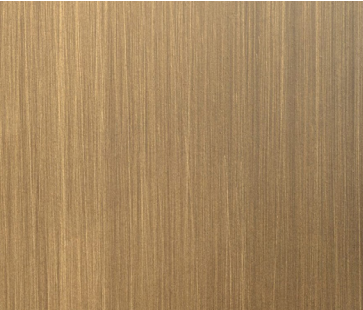
Our color palette is never fixed; it evolves with every project and extends the limits of what can and what can be done within metal and architecture and design.







Brass - Hairline Brushed  
MQ-BR-HB-01



Brass - Hairline Brushed  
MQ-BR-HB-02



Corten - Weathered Rust  
MQ-CT-WR-03



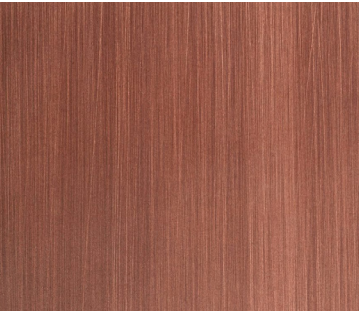
Corten - Speckled Rust  
MQ-CT-SR-02



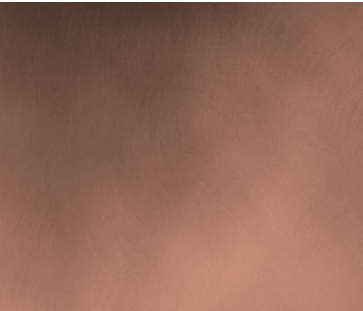
Copper - Verdigris Patina  
MQ-CU-VP-01



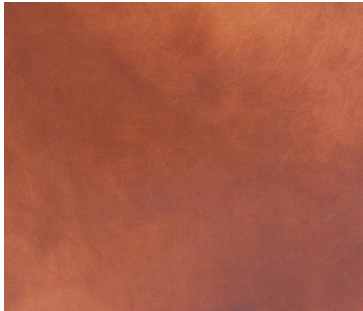
Brass - Ombre Patina  
MQ-BR-SC-03



Copper - Hairline Brushed  
MQ-CU-HB-02



Copper - Smoked Patina  
MQ-BR-SP-02



Copper - Clouded Patina  
TM-BR-CP-01



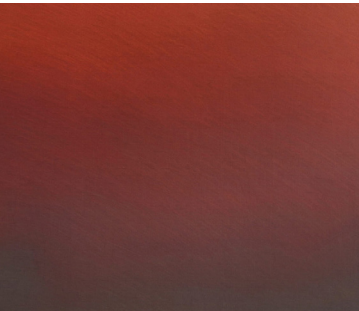
Zinc - Smoked Patina  
MQ-ZN-SP-02



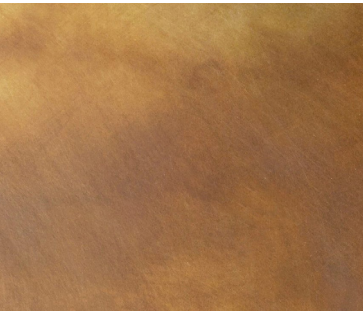
Zinc - Midnight Patina  
MQ-ZN-MP-05



Zinc - Clouded Patina  
MQ-ZN-CP-03



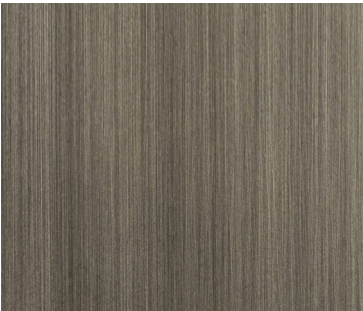
Copper - Ombre Patina  
MQ-CU-SC-03



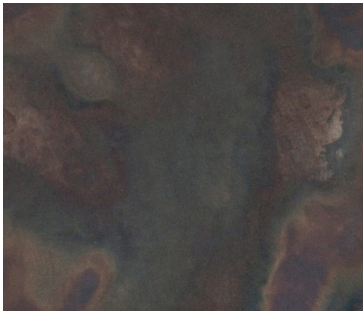
Brass - Clouded Patina  
MQ-BR-CP-01



Brass - Smoked Patina  
MQ-BR-SP-03



Zinc - Hairline Brushed  
MQ-ZN-HB-02



Zinc - Acid Patina  
MQ-ZN-AP-04



Brass - Mirror Polish  
MQ-BR-MP-01





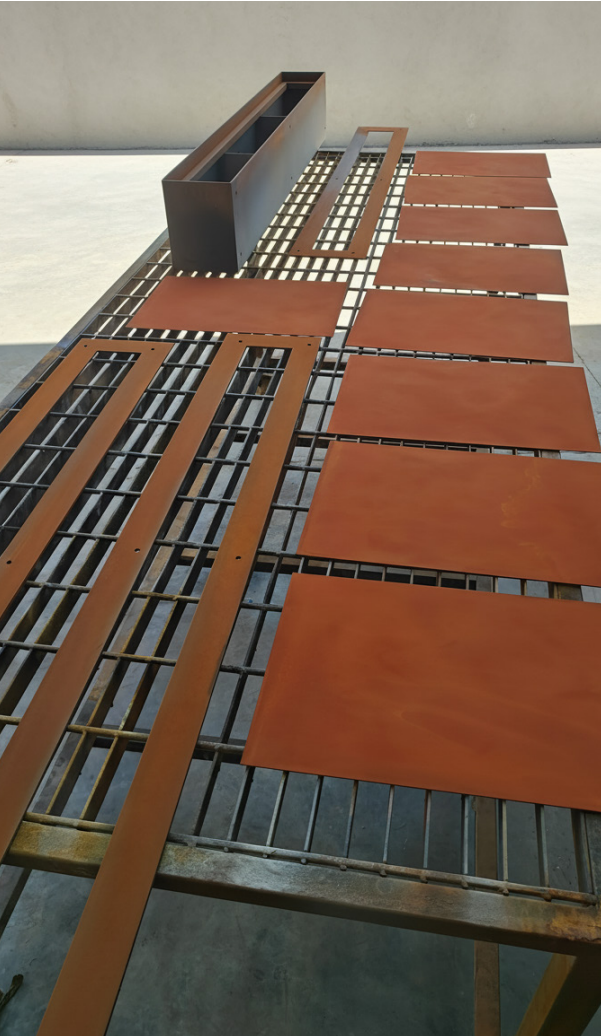
# OUR TECHNOLOGIES

At Modulux, we see finishing as both art and science. Color, texture, and surface quality define personality, and our expertise spans from traditional metals to the most advanced coatings, allowing us to select the right method for each project.



## FINISHES ON TRADITIONAL METALS

TruMetal creates a dense, fully metallic finish with the strength and feel of solid metal. Ideal for heavy-traffic, exterior, or large-scale elements, it brings real durability to cladding, structural members, gates, and sculpture. Its character ranges from raw industrial texture to polished clarity. Because it is true metal, it resists weather, wear, and impact while accepting the same finishes and patinas as traditional alloys, offering both economy and strength at scale.







# METALIQ

— LIQUID METAL COATING

MetaliQ is our cold-applied liquid metal system. It forms seamless, joint-free skins that wrap edges and complex shapes, applied by hand or spray. It bonds to wood, MDF, composites, steel, aluminum, and stone, opening design freedom where weight or fabrication limits would otherwise exclude real metal. Once applied, it can be brushed, polished, or patinated like solid sheet, from mirror gloss to richly textured finishes. Light yet strong, it suits furniture fronts, panels, and intricate forms.



# TRUMETAL

— ARC WIRE SPRAYING

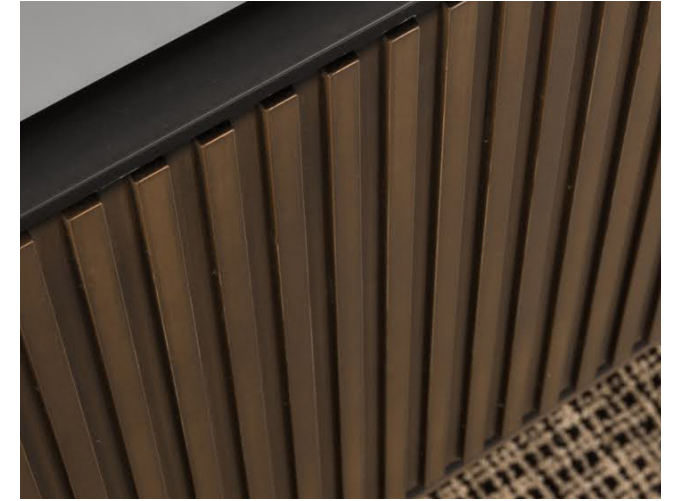
TruMetal creates a dense, fully metallic finish with the strength and feel of solid metal. Ideal for heavy-traffic, exterior, or large-scale elements, it brings real durability to cladding, structural members, gates, and sculpture. Its character ranges from raw industrial texture to polished clarity. Because it is true metal, it resists weather, wear, and impact while accepting the same finishes and patinas as traditional alloys, offering both economy and strength at scale.



APPLICATIONS IN

# ARCHITECTURE & DESIGN

Finishes are versatile and thus a potential ingredient for any project size, from detail work inside at a personal scale through building components at a landmark level. We approach each use in the same consideration of proportion, light, and texture, in order for the metal to be a complement to shape and building material.



## INTERIORS - PANELS, FURNITURE, DOORS, KITCHENS

In interior environments, our finishes bring warmth, precision, and a sense of permanence. Focal points are created by decorative wall panels that can absorb natural or artificial light sources and form a sense of depth and atmosphere. Furniture components gain character once wrapped in actual metal and morph into sculptural objects. Kitchen fronts, doors, and built-in cabinetry become design statements once finished in satin brass, aged bronze, or oxidized copper.



# EXTERIORS - FACADES, PORTALS

Outside, finishes combine resistance and qualitative impact. Big panels of bronze or stainless steel acquire a powerful architectonic character. The structural components, doors, and columns may be united by a continuous finish and acquire an invisible visual code for the building. Weather-proof treatments maintain those surfaces handsome even under stressing conditions.



# PUBLIC SPACES AND ART INSTALLATIONS

In high-traffic sites and cultural landscapes, we provide finishes that are long-lasting and imaginative. We work with sculpture artists and designers of open spaces to implement finishes that accommodate shape while maintaining the piece from erosion. In museum interiors and city spaces, the finish is a component of the narrative, promoting the sensation of feel and communication while maintaining integrity long-term.



By connecting technical performance and craftsmanship, our design and architecture applications prove that a detail like metal can become more than that. It can define the character, mood, and intent of a space.





# OUR PROCESS

Every Modulux project begins by listening. We begin by learning about the design intention, the environment of the space, and the technical characteristics of the materials. This preliminary discussion establishes how we proceed, enabling every finish not just to meet aesthetic goals but also to perform within the space we desire.

## FROM CONCEPT TO COMPLETION

In high-traffic sites and cultural landscapes, we provide finishes that are long-lasting and imaginative. We work with sculpture artists and designers of open spaces to implement finishes that accommodate shape while maintaining the piece from erosion. In museum interiors and city spaces, the finish is a component of the narrative, promoting the sensation of feel and communication while maintaining integrity long-term.

## CRAFTING TAILORED SOLUTIONS

Certain tasks demand a little something unique from the off-the-shelf palette that we maintain. Here, we design one-of-a-kind finishes or compositions of alloys and make trial modifications until the appropriate tone, texture, and finish are discovered. A collaboration, the client is involved at each major milestone to ensure that the final result is what was desired.

## SUPPORT AT EVERY STAGE

Our involvement doesn't end when we certify samples. We also align application schedules with fabricators and site groups, provide detailed specifications, and uphold quality control during production and construction. Whether the finish is applied at our workshop or at the site, we attain uniform results for all elements of the project.

From first discussion to last finish, our process balances art, precision, and commitment to craft. The result is a finish that tells the tale it was commissioned to tell and lasts a lifetime.



# SUSTAINABILITY & ENVIRONMENTAL RESPONSIBILITY

Sustainability is not an afterthought at Modulux. Rather, it's a factor that goes into the manner in which we design, source, and install each finish. We feel that a finish should be attractive and functional and carefully think about the environment that it's going into.



## SAFE SYSTEMS

We use low and zero-VOC finish systems that are healthier for those that apply them and for all those living and working around them. This choice minimizes air contaminants and allows us to work in the field under sensitive conditions without compromising air quality.

## MINIMIZING WASTE

We reduce material wastage at every production stage. By employing precisely, the right quantity of metal for a hard finish, we retain material while providing the finish and feel of solid metal. We reduce offcuts and overspray to a minimum, and we recycle material that goes unused wherever possible.

## BUILT TO LAST

Sustainability also means longevity. We create surfaces that are long-lasting and resistant to fade and corrosion, and therefore don't require replacement very frequently. This reduces the environmental impact of repetitive maintenance and the resource cost of building replacements.

## RESPONSIBLE SOURCING

We work alongside suppliers that we have common values with, and we select metals from responsible sources and give each material careful handling. Respect for the material is as important as the craftsmanship that makes it.

By fusing thoughtful design and responsible approaches, we create finishes that not only attain higher levels of style and performance, but also work toward a more sustainable built world.



METAL FINISHES FOR

# ARCHITECTURAL WINDOW FRAMES

With Modulux, window frames become part of the architectural language. Using MetaliQ liquid metal, we apply real copper, bronze, brass, and other alloys to steel, stainless, or aluminum systems. The finish wraps every corner and junction in a seamless skin that reads as solid metal.

Designed for both interiors and façades, this treatment brings warmth, texture, and continuity to new builds and refurbishments. Finishes range from brushed bronze

to layered patinas and polished brass, all hand-applied to match doors, portals, or interior elements.

Modulux for Windows delivers visual clarity, weather resistance, and long-term color stability. Low-VOC options and serviceable coatings make it suited to sensitive environments, while refined craftsmanship brings detail and depth to every frame.



Blackened brass window frame



Bronze window frame



Cloudy brass window



Corten window frame



Patinated copper window frame





# COPPER WALL CLADDING

Here, the unifying factor was copper. Panels, fronts on furniture, and the TV wall were finished with hand-brushed, weathered MetaliQ Copper and brought warmth and continuity within the rooms. It was applied by hand on MDF and brings depth and texture and yet lightness and accuracy. Subtleties of brushing allow the surfaces to diffuse light with silent movement and bring everyday features architectural highlights.



**Architect:** Tzipi Segev  
**Joinery:** Largo  
**Metal Coating:** MODULUX, MetaliQ  
Copper, brushed aged finish  
**Photography:** Idan Saidi



# BRONZE STAIRS

Each tread was finished in brushed satin MetaliQ Bronze with a warm patina, the edges covered in a smooth, seamless skin. During the day it radiates softly, and by night it deepens against the backdrop of glass and stone. The finish remains unchanged, showing how bronze brings both grace and strength to high-touch details.



**Design:** Ilanit Shilon  
**Finish and Technology:** MODULUX, MetaliQ Bronze, brushed satin, aged patina  
**Photography:** Regev Kalaf



# BRONZE KITCHEN

Cabinet fronts and panelized walls were finished with hand-applied aged MetaliQ Bronze, bringing the warmth of real metal without the weight of solid sheet. It deepens in color with light, softening in daylight and warming at night, anchoring the space with quiet grace and abiding presence.

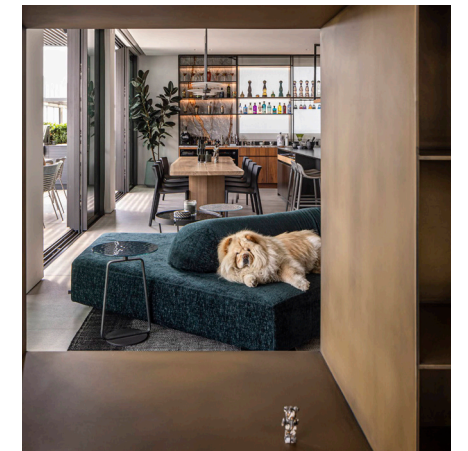
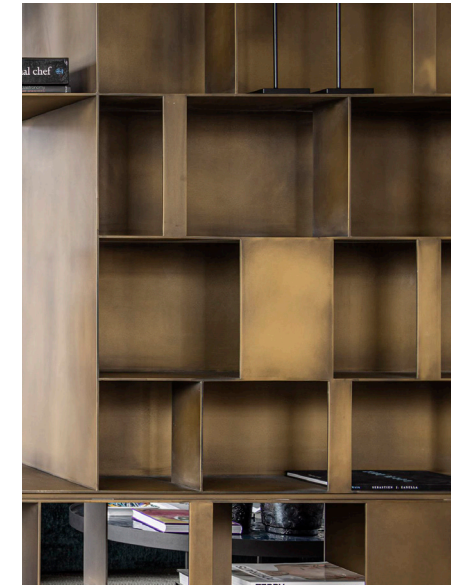
**Design:** Ilanit Shilon  
**Finish and Technology:** MODU-LUX, MetaliQ Bronze, brushed satin, aged patina  
**Photography:** Regev Kalaf





# BRASS BOOKSHELVES

It was covered with MetaliQ Brass in a hand-applied satin patina, creating a smooth, flowing skin. The finish shifts with light, balancing warmth and elegance while pairing seamlessly with walnut and stone. Light in form yet strong in presence, it transforms a functional object into a sculptural piece.



**Design:** Arnon Nir  
**Fabrication:** Studio Firefly  
**Coating and Finishing:** MODULUX,  
MetaliQ Brass, aged satin patina  
**Photography:** Amit Geron



# BRASS KITCHEN

Cabinet fronts and the island were completed in MetaliQ Brass, polished to a glossy mirror finish that reflects light warmly and brightly. During the day it is radiant, and at dusk it becomes luminous, transforming a workspace into the focal point of the room. Lightweight yet true, it shows how real brass brings precision and lasting durability to everyday use.



**Design:** Yael Kol  
**Fabrication:** Gal Kitchens  
**Finish:** MODULUX, MetaliQ Brass,  
mirror polish  
**Photography:** Oren Amos







**MODULUX**

[www.modulux.com](http://www.modulux.com)

[office@modulux.com](mailto:office@modulux.com)

+972-52-459-8280

Industrial Park Bar-On, Israel